



# Uniform Code

July 2020

Holmer Green Senior School believes it is important to maintain a high standard of school uniform. The school's uniform is designed to be smart and to signify pride in belonging to the school. We need all students to wear their uniform with pride.

It is the responsibility of parents and carers to ensure that their children are appropriately dressed for school each day.

It is the responsibility of all members of staff to question students who attend school inappropriately dressed or not wearing full school uniform. Tutors are often the first staff to greet students and are therefore the staff first in a position to challenge students inappropriately dressed. Students may then be referred to their Head of Year if necessary.



## School Uniform

The uniform consists of:

- Navy HGSS blazer
- HGSS logo tie
- Plain white shirt
- HGSS logo jumper
- Trousers or skirt
- A navy blue or black smart coat, weather appropriate (no hoodies or denim)

These are available from our school stockist.

### What we expect you to look like



### What we don't expect to see



# Shoes and Bags

When buying shoes please remember:

- All black — leather or leather imitation.
- Laced, velcro strap or slip on.
- Plain black shoes without accessories attached such as large non-black buckles.
- A smart, plain, dark coloured school bag that is large enough for you to carry your books and materials for the day.

If in doubt, check with a member of senior staff before purchasing.

## What we expect you to look like



## What we don't expect to see



# Hair, Jewellery, Nails etc.

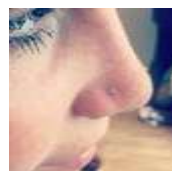
When in school we expect you to:

- Have natural coloured hair
- Have only one pair of studs in your ears, one wristwatch (no iWatches or equivalent)
- Have no inappropriate hair styles
- Have no other piercings
- Have no nail varnish or acrylics
- Wear a plain black headscarf

## What we expect you to look like



## What we don't expect to see





# Coats or Jackets

Coats or Jackets must be a black or navy blue and appropriate for the time of year.

No denim, leather or large logos.

Hoodies are not permitted at any time.

## What we expect you to look like



## What we don't expect to see





# Where to get our Uniform

## Uniform Supplier: Different Class

Order direct from Different Class using the internet shop at [www.differentclassschoolwear.co.uk](http://www.differentclassschoolwear.co.uk) and paying via Paypal or credit card. There is a link from the school website to the online shop.

The user name is **holmergreen** and the password is **senior**. Any queries or returns can be dealt with by calling Different Class direct, **NOT THE SCHOOL**.

Different Class School Wear  
Unit 9 Wessex Road  
Wessex Industrial Estate  
Bourne End  
SL8 5DT

Internet Shop: [www.differentclassschoolwear.co.uk](http://www.differentclassschoolwear.co.uk)

Tel: 01628 531821

Email: [enquiries@differentclassuk.com](mailto:enquiries@differentclassuk.com)

# Uniform List

Description	Further Information	
Blazer *	Navy with school logo	To be kept in a smart, clean appearance and worn during the day, as well as to and from the School, unless directed otherwise by staff.  Only original buttons to be used to fasten — no safety pins etc. (The school keeps a stock of spare original buttons). Sleeves to be worn at full length and not rolled-up. Only HGSS issued badges to adorn
Tie *	Navy with school logo	Only the clip-on HGSS tie and prefect ties if appointed are to be worn.
Shirt	White	The shirt should be tucked in, buttoned and sleeves worn at full length. Any polo neck, T-shirt, vest or underwear worn should not be visible through the shirt. No designer shirts or girls fitted blouses.
Jumper (optional)	Navy with trim and school logo	This is an optional item but no other jumper may be worn.
Trousers (boys)	Black	Black tailored trousers (no jean or other trousers acceptable—black belts only).
Trousers (girls)	Black	HGSS design only allowed.
Skirt	Black	HGSS design only allowed. Skirts are 20" in length, 24" is available if required. Skirts should be no shorter than 2 inches above the top of the knee.
Socks	Black	Black socks/black or skin tone tights.
Outer Coat	Black or navy blue	Outer coats or jackets must be black or navy blue (no denim or leather and no large logos). No hoodies.
Footwear	Black	Black, plain and sensible smart shoes, black laces, no high heels for girls. No boots, canvas shoes or trainers.
PE Top	Navy with school logo	Navy PE shirt with school logo.
PE Shorts	Navy	Navy shadow striped shorts.
PE Socks	Navy	Navy football socks.
PE Sweatshirt (girls)	Grey	Grey sweatshirt with school logo.
Rugby Jersey (boys)	White/Navy	Rugby Jersey with school logo.
PE Waterproof Jacket	Navy with school logo	
PE Tracksuit Jacket	Navy with school logo	
PE Tracksuit Bottoms	Navy with school logo	
PE Trainers	White, any brand	Laced plain white trainers must have non-marking soles. Plimsolls/canvas shoes must not be worn. Laces should be of the same colour as the trainers.
Football Boots	Any brand	Suitable for grass.
Gum shield (for extra-curricular football/rugby clubs)	Any brand	Recommended for outdoor sports e.g. football and rugby. It is not recommended to buy before the club is underway and recommended by staff member.
PE Bag	Black or Navy blue	Any plain drawstring brand.
Rucksack/school bag		Appropriately sized to carry all equipment and books for school..
Hair Accessories	Navy or Black	Hairbands or headscarves for girls must be navy or black.

# Further Guidance

Hair/Appearance	<p>Individual fashion statements such as extreme hair styles or colours are not permitted.</p> <p>Only black or blue hair accessories are allowed.</p> <p>No decorative attachments to braids or extensions are to be worn in the hair. Tram lines, shaved shapes in the hair or 'bar codes' in eyebrows are not permitted.</p> <p>No visible makeup e.g. lip gloss, mascara, eyeliner and eye shadow, nail varnish, nail decorations or extensions are permitted.</p> <p>Tinted or cosmetic contact lenses and decorative dental wear are not permitted.</p> <p>No hoods, hats, caps or bandannas to be worn anywhere on the School site.</p>												
Jewellery/Valuables	<p>No jewellery except for one wrist watch and a maximum of one small plain, gold or silver, stud earring in each ear.</p> <p>Nose studs, other forms of body piercing or visible tattoos are not permitted.</p> <p>No accessories are to be worn around the neck, wrists, ankles or attached to clothing.</p> <p>No iWatches or smart watches to be brought to school.</p> <p>Large amounts of money and expensive personal effects should not be brought on site.</p> <p>The School will not accept liability for any claim arising from theft, accidental loss or damage to personal effects, money, belongings or clothing whilst on the premises.</p> <p>Mobile phones, personal stereos, MP3 players, jewellery etc. are brought on site at the owners risk and will be confiscated if staff are aware of it between 8.55am and 3.15pm. Money should be kept in a purse or wallet.</p> <p>Confiscated items will be held securely for three school days as below:</p> <table data-bbox="467 1227 1393 1451"> <thead> <tr> <th><b>Phone confiscated on...</b></th> <th><b>Returned end of day on...</b></th> </tr> </thead> <tbody> <tr> <td>Monday</td> <td>Thursday</td> </tr> <tr> <td>Tuesday</td> <td>Friday</td> </tr> <tr> <td>Wednesday</td> <td>Monday</td> </tr> <tr> <td>Thursday</td> <td>Tuesday</td> </tr> <tr> <td>Friday</td> <td>Wednesday</td> </tr> </tbody> </table>	<b>Phone confiscated on...</b>	<b>Returned end of day on...</b>	Monday	Thursday	Tuesday	Friday	Wednesday	Monday	Thursday	Tuesday	Friday	Wednesday
<b>Phone confiscated on...</b>	<b>Returned end of day on...</b>												
Monday	Thursday												
Tuesday	Friday												
Wednesday	Monday												
Thursday	Tuesday												
Friday	Wednesday												

## **The Uniform Code is strict and consistently applied.**

The Code encourages a sense of pride, belonging and loyalty to the community of which they are members. Students are expected to be smartly dressed at all times, including on their journey to and from the School.

Any potential inequalities and negative group allegiances are also eliminated by the uniform policy.

When a student is not in full uniform or expected appearance they will not be permitted to attend lessons. In such cases students will, with parental consent, be sent home to change, or alternatively undertake supervised work within the Hub Inclusion Room until the correct uniform is brought to them, or until the student is of correct appearance. If in any doubt about the details of the uniform policy, and to save time and anguish, please contact the School. It is better to check than to rely on assurances from students which are often incorrect.